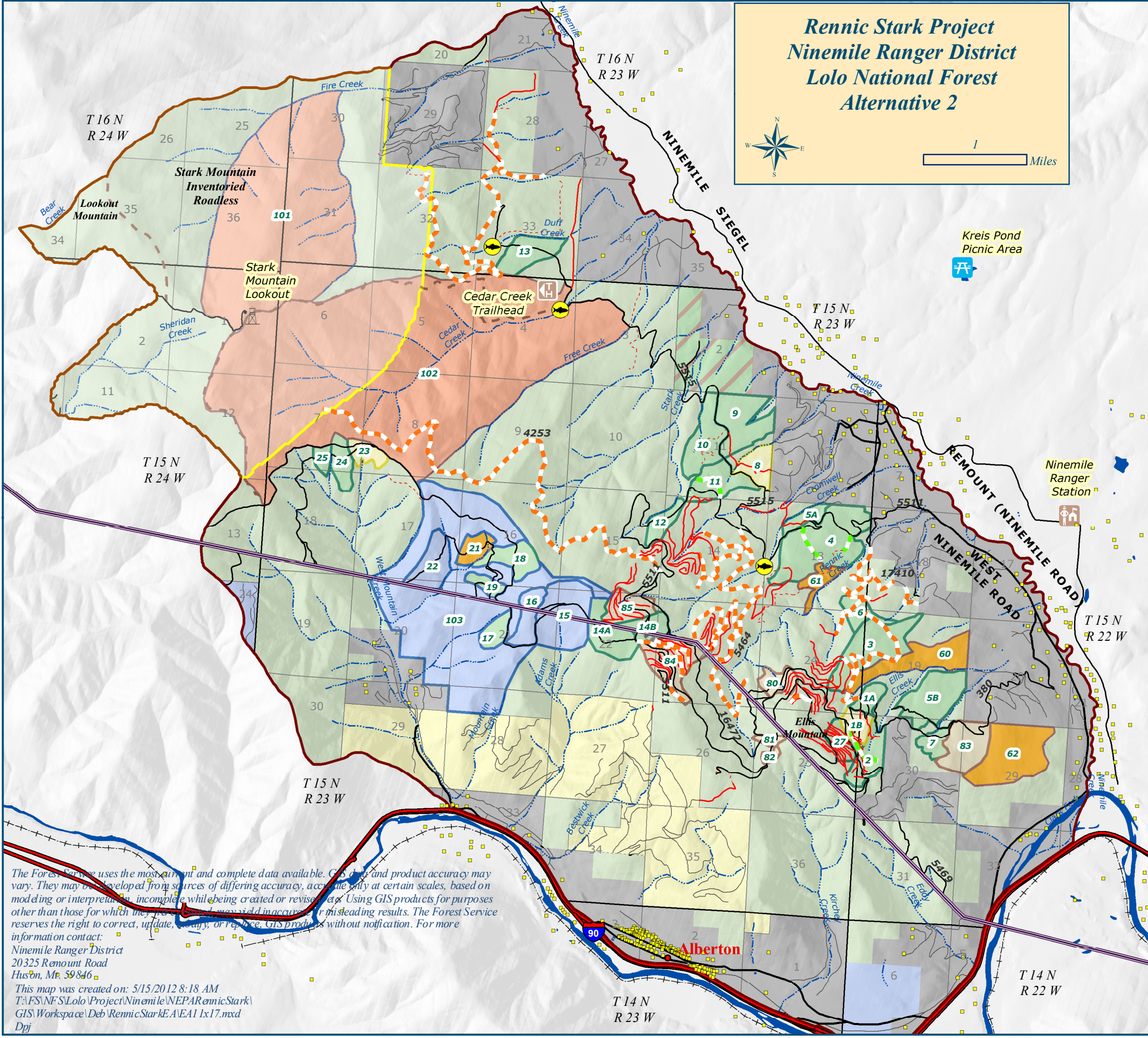
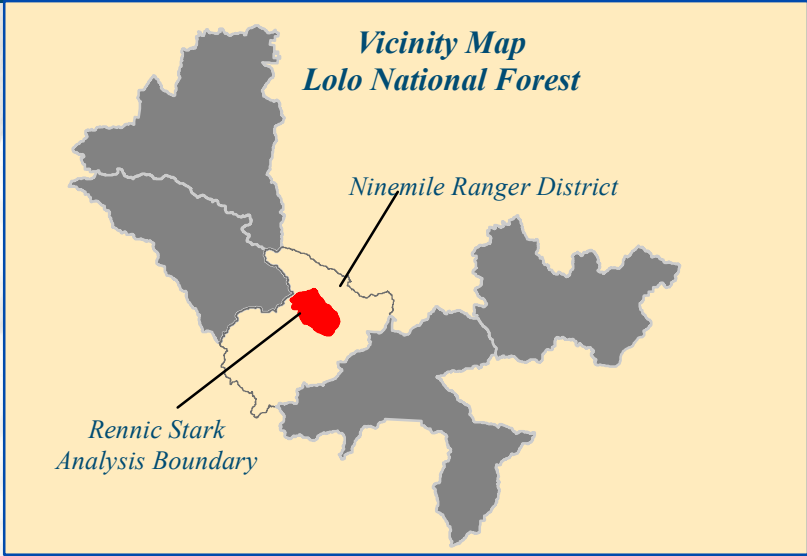
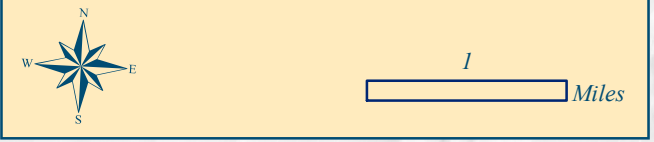


**Rennic Stark Project
Ninemile Ranger District
Lolo National Forest
Alternative 2**



Legend

- Structures
- ~ County Roads
- ~ Private and State Roads
- ~ Existing Roads
- ~ Previously Decommissioned
- ~ Trails
- ~ Railroad
- ~ Streams
- ~ Powerline
- Inventoried Roadless 80% Transparent
- Ownership**
- Acquired from DNRC (2010)
- Forest Service
- Plum Creek
- Private
- State of Montana
- Analysis Area Boundary
- Culvert Replacements
- Trailhead Improvements
- Proposed Vegetation Treatments**
- Thinning Treatments and Prescribed Fire
- Western Larch & Ponderosa Pine Regeneration & Prescribed Fire
- Young Stand Thinning & Prescribe Fire
- Non-commercial Thinning & Handpiling & Burning
- Ecosystem Maintenance Burning
- Ecosystem Maintenance Burning & Understory Slashing or Thinning
- Proposed Road Treatments**
- Reconstruct and Store
- Store
- Construct/Reconstruct Temporary Road
- ~ Decommission

The Forest Service uses the most current and complete data available. GIS data and product accuracy may vary. They may be developed from sources of differing accuracy, accurate only at certain scales, based on modeling or interpretation, incomplete while being created or revised, or using GIS products for purposes other than those for which they were designed may yield inaccurate or misleading results. The Forest Service reserves the right to correct, update, modify, or replace GIS products without notification. For more information contact:
Ninemile Ranger District
20325 Remount Road
Huson, MT 59846
This map was created on: 5/15/2012 8:18 AM
T:\FS\NF\S\Lolo\Project\Ninemile\NEPA\RennicStark\
GIS\Workspace\Deb\RennicStark\EA\EA1 1x17.mxd
Dpj