



**FOREST SERVICE MANUAL
NATIONAL HEADQUARTERS (WO)
WASHINGTON, DC**

**FSM 2600 - WILDLIFE, FISH AND SENSITIVE PLANT
HABITAT MANAGEMENT**

**CHAPTER 2670 - THREATENED, ENDANGERED AND SENSITIVE
PLANTS AND ANIMALS**

Amendment No.: 2600-2009-1

Effective Date: July 24, 2009

Duration: This amendment is effective until superseded or removed.

Approved: Richard W. Sowa
Acting Associate Deputy Chief

Date Approved: 07/22/2009

Posting Instructions: Amendments are numbered consecutively by title and calendar year. Post by document; remove the entire document and replace it with this amendment. Retain this transmittal as the first page(s) of this document. The last amendment to this title was 2600-2005-2 to 2670 contents.

New Document	2672.24b-2676.17c	24 Pages
Superseded Document(s) by Issuance Number and Effective Date	2672.24b-2676.17e (Amendment 2600-90-1, 06/01/1990)	17 Pages

Digest:

2673.5 - Translocation. Clarifies responsibilities and procedures for species translocation.

2674 - Reintroduction. Clarifies responsibilities and procedures for species reintroduction.

2676 - Specific Direction on Individual Species. Editorial improvements and corrections are made throughout, as well as updates to reflect new information and the current status of grizzly bears. The Directives are broadened to be applicable to populations that are listed as Threatened under the Endangered Species Act, and to Distinct Population Segments that are de-listed.

**FSM 2600 - WILDLIFE, FISH, AND SENSITIVE PLANT HABITAT MANAGEMENT
CHAPTER 2670 - THREATENED, ENDANGERED AND SENSITIVE PLANTS AND ANIMALS**

Digest--Continued:

2676.1 - Grizzly Bear. Removes out-of-date population estimates, and adds current status of the population in the Greater Yellowstone Area.

2676.11 - Authority. Authorities are edited slightly to be more inclusive, and wording is broadened from recovery to conservation of the grizzly bear. Summary of recovery criteria in the Recovery Plan is brought up to date. Removes direction in paragraph 3, a 1986 interim rule, and replaces it with a summary of the Final Conservation Strategy for the Grizzly Bear in the Greater Yellowstone Area, and the subsequent delisting of that population. Provides Internet addresses where the three documents may be obtained.

2676.12 - Objectives. Modifies wording in paragraph 1 to reference applicable LMP or Conservation Strategy, and the Recovery Plan.

2676.13 - Policy. Modifies wording throughout to provide for both achieving and sustaining recovery, to recognize that Forest Service commitments are not limited to the Recovery Plan, and to provide a more comprehensive set of examples of expected activities. Removes the requirement to establish standardized mapping criteria across ecosystems in paragraph 5 and renumbers remaining paragraphs.

2676.14a - Regional Forester. Text describing the responsibilities and jurisdiction of IGBC is brought up to date, and broadened to encompass the management of both listed and delisted populations. Removes reference to the Interagency Guidelines on Management of Grizzly Bear from this section, since the Guidelines are now in section 2676.11(2.).

2676.14b - Forest Supervisor. Removes outdated reference to MOA and makes other minor wording changes.

2676.14c - District Ranger. Text is modified to broaden terminology from recovery to conservation, to use accepted terminology of "bear-resistant" in place of bear-proof, and to remove the requirement for a 5-year Forest Plan implementation schedule for each BMU.

2676.15 - Planning. This section is modified to clarify delineation of Management Situations, remove the reference to out of date Quantification of Objectives (2676.15b), Multiple-Use Coordination (2676.15c), and Cost Analysis (2676.15d). Renumbers remaining paragraphs.

2676.15a - Habitat Analysis. Removes habitat mapping activity and adds two habitat analysis activities: to identify objectives and conservation measures, and to consult with the FWS where appropriate.

2676.15b - Program and Budget. Modifies text on planning and prioritizing projects and funding.

**FSM 2600 - WILDLIFE, FISH, AND SENSITIVE PLANT HABITAT MANAGEMENT
CHAPTER 2670 - THREATENED, ENDANGERED AND SENSITIVE PLANTS AND ANIMALS**

Digest--Continued:

2676.15c - Monitoring. Modifies text on developing monitoring procedures to document effects of activities and to assess the effectiveness of management actions, and on using monitoring results. Removes guidance to specify monitoring procedures in plans, and to develop monitoring procedures to assess effectiveness of public information and food container programs, which are included in sections 2676.14a(8.), 2676.14c and 2676.16b.

2676.15e - Program and Budget. This section is removed and subsections incorporated into section 2676.15b.

2676.15f - Monitoring. This section is removed and subsections incorporated into section 2676.15c.

2676.16 - Management and Other Resources. Caption is changed to “Resource Management Coordination”.

2676.16a - National Forest Visitors. Adds guidance to make information on access limitations or closures available to the public.

2676.16b - Food and Other Attractants. This section is modified to recognize the IGBC testing and approval program, to use accepted terminology of “bear-resistant” in place of “bear-proof”, and removal of some guidance.

2676.16c - Black Bear Hunting. Caption is changed from “Baiting for Black Bear Hunting” to “Black Bear Hunting” and slightly modifies text.

2676.16d - Livestock Grazing. Adds guidance to not use sheep or goats to control noxious weeds in occupied grizzly habitat, and removes enumerated paragraphs 1, 2, and 3, which are no longer needed.

2676.16e - Wildlife Damage Management. Caption is changed from “Animal Damage Control” to “Wildlife Damage Management” to reflect currently accepted terminology. Current name of APHIS-Wildlife Services is corrected throughout. Applicability is broadened from occupied bear habitat to include areas where grizzly bears may reasonably be expected to occur, and guidance is added for identifying these areas. Cross-references to other sections of the FSM are updated. Some guidance regarding pocket gopher management is removed. Requirements for predator control are revised to specify that leg hold traps and foot snares must be capable of restraining a grizzly bear, and that selection of traps and frequency of trap checking must minimize unintentional injury or death of grizzly bears.

2676.16f - Mineral Exploration and Development. This section is modified to clarify confusing terminology, and to remove unnecessary guidance.

**FSM 2600 - WILDLIFE, FISH, AND SENSITIVE PLANT HABITAT MANAGEMENT
CHAPTER 2670 - THREATENED, ENDANGERED AND SENSITIVE PLANTS AND ANIMALS**

Digest--Continued:

2676.16g - Timber Management. Wording is changed to address habitat management objectives, rather than recovery criteria, and to remove the requirement to establish thresholds through the cumulative effects assessment process.

2676.16h - Prescribed Fire. This section is added.

2676.16i - Land Adjustments. This section is added.

2676.16j - Habitat Connectivity. This section is added.

2676.17 - Direct Management Techniques. This section is removed and subsections incorporated into section 2676.16. Caption is changed from “Direct Management Techniques” to “Grizzly Bear Population Management”.

2676.17a - Prescribed Fire. Recoded to section 2676.16h.

2676.17c - Land Adjustments. Recoded to section 2676.16i.

2676.17d - Translocation. This section is recoded to 2676.17a and is broadened to recognize the objective of improving genetic diversity, and to remove some unclear wording regarding translocations.

2676.17e - Supplemental Feeding. Recoded to section 2676.17c.

**FSM 2600 - WILDLIFE, FISH, AND SENSITIVE PLANT HABITAT MANAGEMENT
CHAPTER 2670 - THREATENED, ENDANGERED AND SENSITIVE PLANTS AND ANIMALS**

Table of Contents

2672.24b - Coordination with State Agencies	7
2672.24c - Process for Preparing Recovering Strategies	7
2672.24d - Standards for Recovery Strategies.....	7
2672.3 - Regional Guide and Forest Land and Resource Management Plans.....	7
2672.31 - Forest Plan Objectives for Federally Listed Species	8
2672.32 - Forest Plan Objectives for Sensitive Species.....	8
2672.4 - Biological Evaluations.....	8
2672.41 - Objectives of the Biological Evaluation	8
2672.42 - Standards for Biological Evaluations	8
2672.43 - Procedure for Conducting Biological Evaluations	9
2673 - TAKINGS	11
2673.1 - Federally Listed Threatened and Endangered Species	11
2673.2 - Sensitive Species	11
2673.3 - Permits	11
2673.31 - U. S. Fish and Wildlife Service Permits	11
2673.32 - Forest Service Sensitive Plant Collection Permits	12
2673.4 - Forest Service Personnel and Agents	12
2673.41 - Exception to Required Permit.....	12
2673.5 - Translocation	13
2674 - REINTRODUCTION.....	13
2675 - REPORTS.....	14
2676 - SPECIFIC DIRECTION ON INDIVIDUAL SPECIES.....	14
2676.1 - Grizzly Bear.....	14
2676.11 - Authority.....	14
2676.12 - Objectives	15
2676.13 - Policy	15
2676.14 - Responsibility	16
2676.14a - Regional Forester.....	16
2676.14b - Forest Supervisor	17
2676.14c - District Ranger	18
2676.15 - Planning	18
2676.15a - Habitat Analysis.....	18
2676.15b - Program and Budget	19
2676.15c - Monitoring	19
2676.16 - Resource Management Coordination	19
2676.16a - National Forest Visitors	19
2676.16b - Food and Other Attractants.....	20
2676.16c - Black Bear Hunting	20
2676.16d - Livestock Grazing.....	21
2676.16e - Wildlife Damage Management.....	21
2676.16f - Mineral Exploration and Development	23

FSM 2600 - WILDLIFE, FISH, AND SENSITIVE PLANT HABITAT MANAGEMENT
CHAPTER 2670 - THREATENED, ENDANGERED AND SENSITIVE PLANTS AND ANIMALS

2676.16g - Timber Management.....	23
2676.16h - Prescribed Fire.....	23
2676.16i - Land Adjustments.....	23
2676.16j - Habitat Connectivity.....	23
2676.17 - Grizzly Bear Population Management	24
2676.17a - Translocation	24
2676.17b - Helicopters.....	24
2676.17c - Supplemental Feeding.....	24

**FSM 2600 - WILDLIFE, FISH, AND SENSITIVE PLANT HABITAT MANAGEMENT
CHAPTER 2670 - THREATENED, ENDANGERED AND SENSITIVE PLANTS AND ANIMALS**

2672.24b - Coordination with State Agencies

Fully coordinate recovery strategies for fish and wildlife with the objectives of state fish and wildlife agencies. These strategies should become an element of state-wide Comprehensive Plans prepared pursuant to the Sikes Act. Coordinate objectives for plants with the appropriate state agency if listed as threatened or endangered by the state. Incorporate the strategies with Forest Service land management planning. Assign and report "recovery increments" toward the recovery objectives through the program planning and budgeting process.

2672.24c - Process for Preparing Recovering Strategies

Regional Foresters shall prepare recovery strategies within 1 year of Recovery Plan approval and shall provide a copy to the Washington Office Wildlife and Fisheries Director. The Deputy Chief approves Forest Service recovery strategies for listed species with multi-Regional distribution in order to ensure coordination and to monitor Regional objectives and accomplishments toward recovery targets. Exhibit 01, section 2672.24a, is to be a key part of the Annual Wildlife and Fisheries Report. It displays yearly accomplishments toward objectives.

For species without recovery plans, the Deputy Chief and Regional Foresters must develop a schedule that establishes priorities among species and dates for completion of interim recovery strategies. They must update the schedule as new species become listed, or as completion dates must be renegotiated.

For multi-Regional species, the lead Region coordinates proposed recovery strategies with other units and submits the proposal to the Chief for approval.

2672.24d - Standards for Recovery Strategies

Recovery strategies shall include the following:

1. Apportionment of population recovery objectives by Regions and Forests and projected time frames for achieving recovery objectives.
2. Identification of known essential or critical habitat to meet recovery objectives.
3. An annually updated 5-year schedule of activities, funds (appropriation/function), outputs (recovery increments), by decision variable for each Federally listed species. The Washington Office Wildlife and Fisheries Staff provides instructions and format annually to facilitate input to budget formulation.

2672.3 - Regional Guide and Forest Land and Resource Management Plans

Refer to FSM 1920 and 2620 for specific direction on planning for endangered, threatened, proposed, and sensitive species.

**FSM 2600 - WILDLIFE, FISH, AND SENSITIVE PLANT HABITAT MANAGEMENT
CHAPTER 2670 - THREATENED, ENDANGERED AND SENSITIVE PLANTS AND ANIMALS**

2672.31 - Forest Plan Objectives for Federally Listed Species

Federally listed species Forest Plan objectives must relate to the overall goal of effecting recovery and achieving eventual delisting. Management to achieve species recovery levels is required by law. Management at recovery levels specified in Recovery Plans equates with the National Forest Management Act requirement to maintain viable populations of native and desired non-native vertebrate species. Forest Plan preferred alternatives must meet or exceed recovery objectives.

2672.32 - Forest Plan Objectives for Sensitive Species

For sensitive species, include objectives in Forest plans to ensure viable populations throughout their geographic ranges. Once the objectives are accomplished and viability is no longer a concern, species shall not have "sensitive" status.

2672.4 - Biological Evaluations

Review all Forest Service planned, funded, executed, or permitted programs and activities for possible effects on endangered, threatened, proposed, or sensitive species. The biological evaluation is the means of conducting the review and of documenting the findings. Document the findings of the biological evaluation in the decision notice. Where decision notices are not prepared, document the findings in Forest Service files. The biological evaluation may be used or modified to satisfy consultation requirements for a biological assessment of construction projects requiring an environmental impact statement.

2672.41 - Objectives of the Biological Evaluation

1. To ensure that Forest Service actions do not contribute to loss of viability of any native or desired non-native plant or contribute to animal species or trends toward Federal listing of any species.
2. To comply with the requirements of the Endangered Species Act that actions of Federal agencies not jeopardize or adversely modify critical habitat of Federally listed species.
3. To provide a process and standard by which to ensure that threatened, endangered, proposed, and sensitive species receive full consideration in the decisionmaking process.

2672.42 - Standards for Biological Evaluations

In order to meet professional standards, biological evaluations must be conducted or reviewed by journey or higher level biologists or botanists (FSM 2634). Biological evaluations shall include the following:

**FSM 2600 - WILDLIFE, FISH, AND SENSITIVE PLANT HABITAT MANAGEMENT
CHAPTER 2670 - THREATENED, ENDANGERED AND SENSITIVE PLANTS AND ANIMALS**

1. An identification of all listed, proposed, and sensitive species known or expected to be in the project area or that the project potentially affects. Contact the Fish and Wildlife Service (FWS) or the National Marine Fisheries Service (NMFS) as part of the informal consultation process for a list of endangered, threatened, or proposed species that may be present in the project area.
2. An identification and description of all occupied and unoccupied habitat recognized as essential for listed or proposed species recovery, or to meet Forest Service objectives for sensitive species.
3. An analysis of the effects of the proposed action on species or their occupied habitat or on any unoccupied habitat required for recovery.
4. A discussion of cumulative effects resulting from the planned project in relationship to existing conditions and other related projects.
5. A determination of no effect, beneficial effect, or "may" effect on the species and the process and rationale for the determination, documented in the environmental assessment or the environmental impact statement.
6. Recommendations for removing, avoiding, or compensating for any adverse effects.
7. A reference of any informal consultation with the Fish and Wildlife Service as well as a list of contacts, contributors, sources of data, and literature references used in developing the biological evaluation.

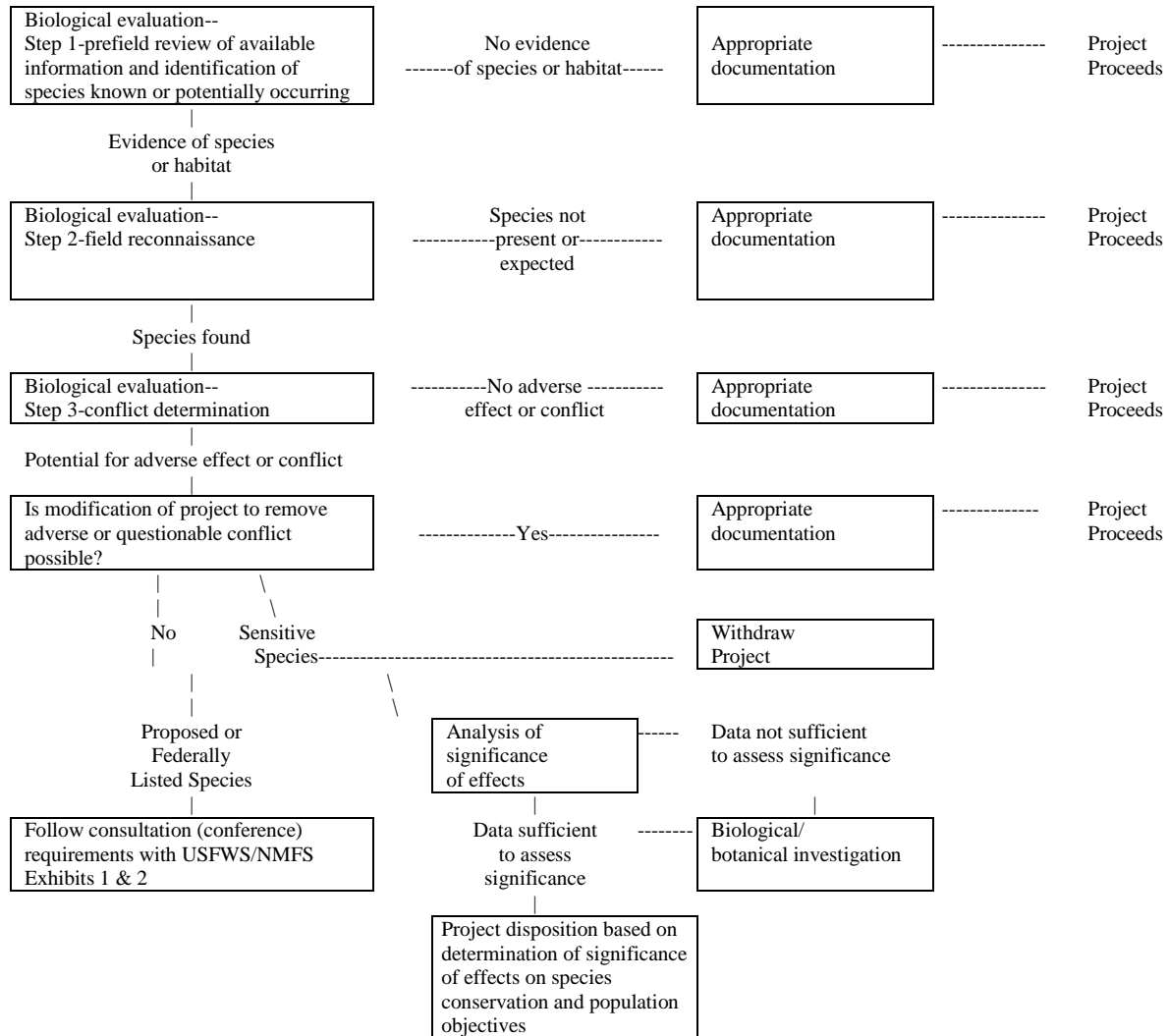
2672.43 - Procedure for Conducting Biological Evaluations

A suggested procedure for conducting and documenting findings of a biological evaluation is outlined in exhibit 01.

**FSM 2600 - WILDLIFE, FISH, AND SENSITIVE PLANT HABITAT MANAGEMENT
 CHAPTER 2670 - THREATENED, ENDANGERED AND SENSITIVE PLANTS AND ANIMALS**

2672.43 - Exhibit 01

BIOLOGICAL EVALUATION PROCESS - THREATENED, ENDANGERED, PROPOSED AND SENSITIVE SPECIES PROJECT PROPOSAL



**FSM 2600 - WILDLIFE, FISH, AND SENSITIVE PLANT HABITAT MANAGEMENT
CHAPTER 2670 - THREATENED, ENDANGERED AND SENSITIVE PLANTS AND ANIMALS**

2673 - TAKINGS

2673.1 - Federally Listed Threatened and Endangered Species

The taking of federally listed endangered fish and wildlife species is prohibited as is the removal and collection of any endangered plant on lands under Federal jurisdiction. The taking of federally listed threatened species may be permitted by regulations of the Secretary of the Interior.

Lacey Act amendments of 1981 extend protection from sale, receipt, purchase, transport, or interstate commerce to plants listed on a Convention on International Trade in Endangered Species appendix or plants included in a state law that provides for the conservation of plant species threatened with extinction.

The Forest Service shall enforce vigorously 36 CFR 261.9(b) regarding the taking of Federally listed plants and shall apply equivalent protection to proposed plant species until determinate of their Federal status.

2673.2 - Sensitive Species

1. Wildlife and Fish. The Forest Service shall cooperate with states in their enforcement of state laws that protect wildlife species from illegal taking. All permits for taking are issued under the authority of state law. The Forest Service shall aid enforcement for protection of species in Convention on International Trade in Endangered Species appendixes, state-listed species, and other species protected under state law (Lacey Act amendments of 1981).
2. Plants. Collection of sensitive plants should be permitted only for scientific or educational purposes or for the conservation or propagation of the species, and must be authorized by a Forest Service officer (36 CFR 261.1a).

The Forest Service shall enforce 36 CFR 261.9(b) regarding the taking of sensitive plant species.

2673.3 - Permits

2673.31 - U. S. Fish and Wildlife Service Permits

The Federal Wildlife Permit Office of the U. S. Wildlife Service (FWS) (for terrestrial species), or the Permit Program Manager, Office of Marine Mammals and Endangered Species, National Oceanic and Atmospheric Administration Fisheries Service (NOAA Fisheries), (for most marine species), have the authority to issue permits for activities prohibited by the Endangered Species Act. Permits are required to take, collect, possess, transport, and buy or sell threatened and

**FSM 2600 - WILDLIFE, FISH, AND SENSITIVE PLANT HABITAT MANAGEMENT
CHAPTER 2670 - THREATENED, ENDANGERED AND SENSITIVE PLANTS AND ANIMALS**

endangered wildlife, fish, and plants. Rules governing FWS or NOAA Fisheries permits and procedures for taking endangered plants and animals are in 50 CFR 17. The permitting office must coordinate with the Forest Service on permits issued for species on National Forest System lands. Direct applicants to a FWS or NOAA Fisheries office for permits.

2673.32 - Forest Service Sensitive Plant Collection Permits

Regional Foresters shall establish criteria for the collection of sensitive plants and shall ensure that all collections are covered by a Forest Service permit.

Present and future knowledge concerning sensitive plants comes partially from collection and study of specimens by botanists and other professionals in the botanical community. Although collection of sensitive plants will continue to be necessary in order to expand the knowledge base, it must be controlled.

2673.4 - Forest Service Personnel and Agents

No Forest Service activity involving the possession, transport, or taking of Federally listed wildlife, fish, and plants may occur without a permit obtained from the Wildlife Permit Office of the U. S. Fish and Wildlife Service (FWS), and/or under agreements with the states. Applicants may request permits for scientific, educational, and conservation purposes.

Even where a memorandum of understanding or cooperative agreement exists a permit is required for Forest Service employees if the taking of a Federally listed endangered species is likely to result in:

1. The death or permanent disabling of the specimen.
2. The removal of the specimen from the state.
3. The introduction of the specimen or any of its progeny into an area beyond the historical range of the species.
4. The holding of the specimen in captivity for a period of more than 45 consecutive days.

Line officers responsible for implementing an action may redelegate to lower level line officers the authority to apply directly to FWS or NOAA Fisheries for required permits. The responsible line officer shall designate the individuals authorized to conduct activities under the terms of the permits.

2673.41 - Exception to Required Permit

Any Forest Service employee or agent may, when acting in the course of official duties, take threatened or endangered wildlife without a permit if such action is necessary to:

**FSM 2600 - WILDLIFE, FISH, AND SENSITIVE PLANT HABITAT MANAGEMENT
CHAPTER 2670 - THREATENED, ENDANGERED AND SENSITIVE PLANTS AND ANIMALS**

1. Aid a sick, injured, or orphaned specimen.
2. Dispose of a dead specimen.
3. Salvage a dead specimen that may be useful for scientific study.
4. Remove specimens that constitute a demonstrable, but non-immediate threat to human safety, provided that the taking is done in a humane manner; the taking may involve killing or injuring only if it is impossible to eliminate such threat by live capture and release of the specimen unharmed in a remote area.
5. Defend the employee's own life or the lives of others.

Report any such taking to the FWS, Division of Law Enforcement, Washington, D.C., within 5 days.

2673.5 - Translocation

Translocation to achieve recovery objectives of listed species may be desirable to meet purposes of the Endangered Species Act. Translocation of species on National Forest System lands is primarily the responsibility of U.S. Fish and Wildlife Service, National Marine Fisheries Service, and/or state fish and wildlife management agencies, with cooperation from the Forest Service. Any required environmental analyses under the National Environmental Policy Act or state environmental laws are the responsibility of these primary implementing agencies. Forest Supervisors will cooperate with these agencies on any translocation plans.

Consistent with FSM 2323.32 (4.), manage designated wilderness areas to protect known populations of federally listed threatened or endangered species where necessary for their perpetuation and aid in their recovery in areas of previous habitation. When alternative areas outside of designated wilderness areas offer equal or better protection, take actions first to recover threatened or endangered species in areas outside of these wilderness areas.

2674 - REINTRODUCTION

The Forest Service shall encourage the reintroduction of listed wildlife, fish, and plants onto suitable unoccupied habitat when such actions promote recovery of the species. Reintroductions of species on National Forest System lands is primarily the responsibility of U.S. Fish and Wildlife Service, National Marine Fisheries Service, and/or state fish and wildlife management agencies, with cooperation from the Forest Service. Any required environmental analyses under the National Environmental Policy Act or state environmental laws are the responsibility of these primary implementing agencies. Forest supervisors will cooperate with these agencies on any reintroduction plans. All reintroduction projects should be consistent with objectives of approved recovery plans, if available. Special restrictions on reintroductions may apply in classified areas.

**FSM 2600 - WILDLIFE, FISH, AND SENSITIVE PLANT HABITAT MANAGEMENT
CHAPTER 2670 - THREATENED, ENDANGERED AND SENSITIVE PLANTS AND ANIMALS**

2675 - REPORTS

The Forest Service shall monitor the progress of efforts to meet established species recovery objectives through the annual wildlife and fisheries report and through activity and program reviews. Recovery increments are the measured outputs.

2676 - SPECIFIC DIRECTION ON INDIVIDUAL SPECIES

2676.1 - Grizzly Bear

Nineteen National Forests in Regions 1, 2, 4, and 6 are involved in grizzly bear conservation and management. Human-caused mortality and loss of suitable habitat has caused a significant decline in the distribution and abundance of grizzly bears (*Ursus arctos horribilis*). In 1975, the Fish and Wildlife Service (FWS) listed the grizzly bear as a “threatened” species in the lower 48 states. The Grizzly Bear Recovery Plan identifies six recovery zones. In the Greater Yellowstone recovery zone, as a result of sustained and coordinated management across agencies and land ownerships, all demographic recovery criteria have been met since 1998.

2676.11 - Authority

The Endangered Species Act, National Forest Management Act, Multiple Use-Sustained Yield Act, and other laws, regulations, and policies direct Forest Service land managers to carry out active programs for the conservation of the grizzly bear.

1. Grizzly Bear Recovery Plan. The Recovery Plan identified six grizzly bear recovery zones and defined demographic recovery criteria for the Yellowstone, Northern Continental Divide, Cabinet/Yaak, and Selkirk ecosystems in terms of numbers of females with cubs, occupancy of Bear Management Units (BMU), and human-caused mortality limits. Two requirements that must be met before de-listing are: 1) attainment of demographic recovery criteria within the specified monitoring period, and 2) completion of an interagency conservation strategy that will ensure that the population and habitat within the recovery zone will be conserved after de-listing. The recovery plan is available at: http://ecos.fws.gov/docs/recovery_plans/1993/930910.pdf
2. Interagency Guidelines on Management of Grizzly Bear. (Volume 51, Number 228 Federal Register 42863-42866, November 26, 1986). The Guidelines identify and describe five management situations and set forth the specific guidelines for managing resources in these areas in a manner that is compatible with the goal of achieving recovery of the grizzly bear in the contiguous United States. The guidelines are available at: <http://www.fs.fed.us/r1/wildlife/igbc/Information/guidelines.pdf>
3. Conservation Strategy for the Grizzly Bear in the Greater Yellowstone Area. The Conservation Strategy (2003) identifies a Primary Conservation Area (PCA, formerly the Recovery Zone) where occupancy by grizzly bears is anticipated and acceptable, and will

**FSM 2600 - WILDLIFE, FISH, AND SENSITIVE PLANT HABITAT MANAGEMENT
CHAPTER 2670 - THREATENED, ENDANGERED AND SENSITIVE PLANTS AND ANIMALS**

provides guidance for coordinated management and monitoring within and outside the PCA when the grizzly bear is delisted. The grizzly bear in the GYA was delisted in 2007. The Recovery Plan and Interagency Grizzly Bear Guidelines no longer apply to the Greater Yellowstone Area, and were replaced by the conservation strategy. The “Memorandum of Understanding Detailing Agency Agreement to Implement the Conservation Strategy”, which is included as pages 12-13 of the conservation strategy, was signed by the affected Regional Foresters in 2003. The conservation strategy is available at:

http://www.fs.fed.us/r1/wildlife/igbc/ConservationStrategy/replacement_cs.pdf

The GYA National Forests are now manage grizzly bears under the 2006 Forest Plan Amendment for Grizzly Bear Habitat Conservation for the Greater Yellowstone National Forests FEIS.

2676.12 - Objectives

1. Assure that grizzly bear habitat on National Forest System lands is maintained or enhanced in accordance with goals and objectives and management guidance established in the recovery plan or applicable conservation strategy, and in the National Forest Land Management Plans.
2. Eliminate preventable mortality of grizzly bears and minimize the potential for grizzly bear-human conflicts on National Forest System lands.
3. Accomplish planning and management for grizzly bear conservation in an integrated and cost-effective manner.

2676.13 - Policy

1. Cooperate with state agencies, the U.S. Fish and Wildlife Service, National Park Service, Bureau of Land Management, and other agencies and groups to carry out active programs to conserve the grizzly bear over the long term.
2. Implement Forest Service commitments for the conservation of grizzly bears and their habitat through coordinated planning and management.
3. Provide appropriate protection for individual grizzly bears that roam outside of delineated recovery zones and primary conservation areas. Work with the states to identify the areas where management for grizzly bears is biologically suitable and socially acceptable, and to coordinate management of nuisance bears.

**FSM 2600 - WILDLIFE, FISH, AND SENSITIVE PLANT HABITAT MANAGEMENT
CHAPTER 2670 - THREATENED, ENDANGERED AND SENSITIVE PLANTS AND ANIMALS**

4. Establish and implement uniform planning and management procedures concerning grizzly bears and their habitat. These should include cumulative effects analysis processes, public information and education, sanitation and management of unnatural foods, and coordinated management of motorized access.
5. Establish and implement communication, education, assistance, and land management programs to eliminate preventable mortality of grizzly bears and to minimize grizzly-human conflicts.
6. Conduct multiple-use management of grizzly bear habitat in a manner that is compatible with the goal of grizzly bear conservation.
7. Periodically monitor and report on habitat and population conditions and trends at appropriate spatial and temporal scales.

2676.14 - Responsibility

2676-14a - Regional Forester

In addition to the responsibilities listed at FSM 2670.44, Regional Foresters in Regions 1, 2, 4, and 6 shall:

1. Serve as members of the Interagency Grizzly Bear Committee (IGBC) to:
 - a. Ensure coordination with other regions, state and Federal agencies, local and tribal governments, and Canadian provinces to implement the recovery plan or applicable conservation strategy to establish and achieve regional objectives for conservation of the grizzly bear.
 - b. Assure the implementation of approved projects applicable to National Forest System lands.
 - c. Guide and plan research direction.
 - d. Evaluate the effectiveness of management actions in contributing to established goals for grizzly bear conservation.
 - e. Provide direction, advice, and assistance to IGBC Subcommittees.
2. Ensure coordination with other Regions and agencies to implement the Grizzly Bear Recovery Plan or applicable conservation strategy, and to establish and achieve Forest Service management objectives. In recovery zones that are contiguous with portions of British Columbia and Alberta, seek to coordinate with appropriate representatives to identify and achieve mutual objectives for the conservation of the grizzly bear.

**FSM 2600 - WILDLIFE, FISH, AND SENSITIVE PLANT HABITAT MANAGEMENT
CHAPTER 2670 - THREATENED, ENDANGERED AND SENSITIVE PLANTS AND ANIMALS**

3. Coordinate with other regions to develop and ensure funding continuity for essential long-term grizzly bear habitat management, information and education, research, and monitoring programs.
4. Coordinate with other regions to develop and implement consistent procedures, guidelines, and actions to sustain grizzly bears and their habitat.
5. Coordinate as appropriate proposed decisions on wildlife damage management activities in grizzly bear habitat (FSM 2676.16e), grizzly bear translocation (FSM 2676.17a), and the use of helicopters for grizzly bear management in wilderness (FSM 2676.17b, FSM 2326.04b).
6. Develop and ensure implementation of criteria and methods to prevent human-caused mortality of grizzly bears.
7. Collaboratively develop public information programs concerning safety and proper behavior by national forest visitors in grizzly bear habitat (FSM 2676.16a). Actively disseminate information about the grizzly bear and important habitats, practices to minimize the potential for grizzly-human conflicts (such as the proper use of bear spray), and other conservation efforts.
8. In coordination with the IGBC, develop policy, guidance, testing procedures, and other programs to assure proper handling and storage of attractants on National Forest System lands.
9. Ensure accurate accounting of costs of grizzly bear conservation and management activities, and ensure that activities are implemented in a cost-effective manner.

2676.14b - Forest Supervisor

In addition to the responsibilities listed at FSM 2670.45, Forest Supervisors in Regions 1, 2, 4 and 6 shall:

1. As assigned, serve as a member of Interagency Grizzly Bear Committee (IGBC) Subcommittees which have the following responsibilities:
 - a. Implement management actions in a coordinated fashion.
 - b. Propose management policy or programs to the IGBC.
 - c. Establish task forces to develop recommendations or implement approved actions when needed (such as law enforcement, information and education, food storage, habitat improvements).

**FSM 2600 - WILDLIFE, FISH, AND SENSITIVE PLANT HABITAT MANAGEMENT
CHAPTER 2670 - THREATENED, ENDANGERED AND SENSITIVE PLANTS AND ANIMALS**

- d. Identify research needs and financial needs for management and submit to the IGBC.
 - e. Report to IGBC on progress concerning management actions necessary to conserve the grizzly bear.
2. Implement national and regional direction concerning grizzly bears through forest-wide procedures and actions, including, but not limited to, habitat mapping and modeling, land adjustments, motorized access management, sanitation programs and special orders, and information and education materials.
 3. Ensure inter-agency coordination at appropriate levels and maintain contact with interested publics.

2676.14c - District Ranger

In addition to the responsibilities listed at FSM 2670.46, District Rangers in Regions 1, 2, 4 and 6 shall:

1. Contribute to grizzly bear conservation through site-specific planning and management actions.
2. Ensure that conservation provisions for grizzly bears and their habitat are included in leases, permits, contracts, and other authorizations affecting grizzlies and their habitats, and inspect sites under contracts, leases, permits, or authorizations for compliance with grizzly bear conservation measures.
3. Develop and implement practices to minimize potential for grizzly-human conflicts (for example, monitoring of livestock allotments and hunting camps, managing access, or providing bear-resistant containers) and to maintain or improve habitat effectiveness.

2676.15 - Planning

2676.15a - Habitat Analysis

1. Collect, analyze, and display grizzly bear habitat information. Within a recovery area, delineate grizzly bear habitat into management situations, as described in the Interagency Grizzly Bear Guidelines. Within delisted populations, ensure that habitat monitoring and analysis requirements established in the applicable conservation strategy are implemented.
2. Identify appropriate management objectives and conservation measures for coordination of livestock grazing, timber management, recreation, and other land uses, as part of forest planning and project planning processes.

**FSM 2600 - WILDLIFE, FISH, AND SENSITIVE PLANT HABITAT MANAGEMENT
CHAPTER 2670 - THREATENED, ENDANGERED AND SENSITIVE PLANTS AND ANIMALS**

3. Use a cumulative effects analysis process to estimate the possible impacts of land use activities on grizzly bear habitat and attainment of grizzly bear habitat management objectives, where appropriate.
4. For listed populations, consult with the U.S. Fish and Wildlife Service as appropriate.

2676.15b - Program and Budget

Plan and prioritize projects and funding required to meet or exceed grizzly bear habitat management objectives on a five-year schedule to clearly identify needs and promote funding continuity on an inter-Regional basis.

2676.15c - Monitoring

1. Develop and implement monitoring procedures to document effects of various management activities on grizzly bears and their habitat, and to track progress in achieving goals, objectives, and desired conditions.
2. Develop monitoring procedures to assess the effectiveness of management actions, including public information programs and attractants storage, in reducing the number and types of reported grizzly bear-human conflicts.
3. Use monitoring results to refine and adapt management practices.

2676.16 - Resource Management Coordination

2676.16a - National Forest Visitors

Implement a comprehensive public education program to provide campers and other National Forest visitors with information concerning appropriate behavior and precautions in occupied grizzly bear habitat. Make detailed, written information available at Forest Service offices, trailheads and camping areas. This information should include, but not necessarily be limited to, the following:

1. A description of precautions and instructions concerning visitor behavior to reduce the potential for human-grizzly conflicts and to reduce preventable mortality of grizzly bears. This description should include a warning that certain risks exist when visiting anywhere in grizzly bear habitat.
2. The location of known grizzly bear concentration areas, such as deer and elk winter ranges, fish spawning areas, and ripe berry fields.
3. A description of possible problems and dangers of having dogs on trails and in camps.
4. Regulations concerning grizzly bear attractants (FSM 2676.16b).

**FSM 2600 - WILDLIFE, FISH, AND SENSITIVE PLANT HABITAT MANAGEMENT
CHAPTER 2670 - THREATENED, ENDANGERED AND SENSITIVE PLANTS AND ANIMALS**

5. Procedures for reporting human and grizzly bear conflicts or grizzly bear mortality.
6. Regulations concerning access limitations or closures.

2676.16b - Food and Other Attractants

Proper storage, handling, and disposal of food and other attractants are vital for minimizing grizzly-human conflicts. Emphasize education of the public concerning the dangers of unsecured food and other attractants in occupied grizzly bear habitat. Where necessary prohibit or regulate the possession, storage, or transport of food, refuse, and plant and animal material that attracts grizzly bears. Food storage requirements should be in accordance with IGBC guiding principles and should be as consistent as possible across field units to promote public understanding and compliance.

Follow IGBC guidelines for testing and use of food and refuse containers. Encourage portable bear-resistant containers and temporary hanging facilities for use within wilderness areas; require bear-resistant containers if necessary to protect people and bears. If other options are not possible, design permanent bear-resistant containers or hanging facilities to be compatible with maintaining wilderness character. Provide bear-resistant food/refuse containers at key recreation sites outside wilderness.

Work with counties and private land owners to reduce the availability of bear attractants and improve human safety.

2676.16c - Black Bear Hunting

By state regulation, baiting for black bear hunting is prohibited in designated Grizzly Bear Recovery Zones and in the Primary Conservation Area in the Yellowstone Ecosystem. Provide information to hunters at Forest Service offices and at camp sites in black bear hunting areas. Work with appropriate state wildlife law enforcement officials to ensure compliance.

Work with state wildlife agencies to encourage the elimination of baiting for black bear hunting in all areas known or likely to be occupied by grizzly bears. Inform black bear hunters in these areas about the risk of shooting a grizzly bear (as a result of mistaking it for a black bear) that may be attracted to the bait.

Work with state wildlife agencies to improve hunter education and other methods to reduce or eliminate grizzly bear mortalities attributable to mistaken identity by black bear hunters. See also FSM 2643.12 Use of Bait for Resident Game Hunting.

**FSM 2600 - WILDLIFE, FISH, AND SENSITIVE PLANT HABITAT MANAGEMENT
CHAPTER 2670 - THREATENED, ENDANGERED AND SENSITIVE PLANTS AND ANIMALS**

2676.16d - Livestock Grazing

Historical and recent conflicts between grizzly bears and livestock are well documented. Grizzlies prey more readily upon sheep than cattle, but cattle may compete with grizzlies for forage in key habitats such as riparian sites. Minimize the potential for depredation or other conflicts between grizzly bears and sheep, cattle, and other livestock on national forest lands by implementing the direction in the guidelines or conservation strategy concerning grazing in occupied grizzly bear habitat. Relocate sheep to alternate ranges outside of grizzly bear habitat if grizzly bear depredation has occurred or is likely to occur and the management options in the guidelines are not completely successful. Offer permittees vacant allotments as an alternative to canceling permits, where possible.

Do not use sheep or goats as a tool for controlling noxious weeds in occupied grizzly bear habitat.

2676.16e - Wildlife Damage Management

Wildlife damage management on National Forest System lands will be conducted in partnership with APHIS-WS in accordance with the existing interagency MOU (FSM 1543.13) and in cooperation with appropriate state agencies. APHIS-WS and applicable state agencies have statutory authority to conduct predator control on NFS lands

In accordance with the MOU, APHIS-WS is responsible for NEPA compliance regarding wildlife damage management activities on National Forest System lands, in cooperation with the forest service and appropriate state agencies.

The Forest Service may require mitigation or restriction of APHIS-WS activities as needed to comply with forest plans, including grizzly bear management provisions. APHIS-WS will notify the Forest Service about wildlife damage management requests prior to conducting wildlife damage management activities in areas where grizzly bears may reasonably be expected to occur as identified on current grizzly bear distribution maps. These maps are prepared, maintained, and distributed by U.S. Fish and Wildlife Service (FWS) or Interagency Grizzly Bear Study Team (GYA) in cooperation with applicable state and Federal agencies. FWS and IGBST are responsible to update the maps as new information warrants, and to make them available to cooperating agencies.

Wildlife damage management activities on National Forest System lands will be carried out in conformance with the Endangered Species Act, Wilderness Act, and other applicable federal and state laws and regulations, USDA policy on fish and wildlife (Departmental Regulation 9500-4), FS policies including those on pesticide use, and applicable forest land management plans.

**FSM 2600 - WILDLIFE, FISH, AND SENSITIVE PLANT HABITAT MANAGEMENT
CHAPTER 2670 - THREATENED, ENDANGERED AND SENSITIVE PLANTS AND ANIMALS**

The Forest Service will carefully monitor wildlife damage management activities in areas occupied by grizzly bears or where grizzly bears may reasonably be expected to occur, because such practices often involve lethal or potentially lethal methods that might harm, seriously injure, or kill an exposed grizzly bear, especially yearlings or cubs of the year.

All wildlife damage management programs on National Forest System lands in occupied grizzly bear habitat or where grizzly bears may reasonably be expected to occur will use tools, methods, and protocols agreed to by the U.S. Fish and Wildlife Service and APHIS-WS. This may include, but is not limited to, specifications for types of devices that may be used and time intervals for checking traps, snares and other potentially harmful or lethal devices. In order to fulfill forest plan commitments for conservation of designated sensitive species or species of concern, this requirement applies to both ESA listed and delisted grizzly bear populations in the contiguous 48 states, if delisted species are designated as sensitive species or species of concern.

Use toxicants and other lethal techniques for wildlife damage management conservatively in occupied grizzly bear habitat or areas where grizzly bears may reasonably occur. Follow guidance in FSM 2650, FSM 2671, FSM 1543.13, and FSM2323.33c.

1. Pocket Gophers and Other Non-predators.

a. Non-chemical controls: When planning timber harvest in occupied grizzly habitat or areas where grizzly bears may reasonably occur, carefully consider the selection of silvicultural prescriptions, logging systems, site preparation methods, and stand regeneration practices to minimize the potential for significant increases in damage-causing wildlife species and consequent needs for control actions.

b. Chemical control: Search the proposed treatment area immediately prior to treatment for sign of grizzly. If the search reveals grizzly sign or indicates that a grizzly might occur on the area during the treatment period, do not proceed unless potential negative effects to grizzly bears can be avoided. If baiting proceeds, use baits that have been shown to present a negligible hazard to grizzly bears.

2. Predators. APHIS-WS and applicable state agencies have statutory authority to conduct predator control on NFS lands. The use of M-44s, livestock protection collars, pesticides, leg hold traps, foot snares or neck snares capable of restraining, harming or killing a grizzly bear (adult, yearling, or cub of the year) will only be used for predator control activities in occupied grizzly bear habitat or areas where grizzly bears may reasonably be expected to occur, in a manner consistent with agreements (including ESA consultations) between the implementing agency(s), APHIS-WS and the U.S. Fish and Wildlife Service. Refer to FSM 2323.33c for restrictions on the use of M-44 devices, livestock protection collars, and pesticides in designated wilderness. Agreed upon tools, techniques, and protocols will apply to all APHIS-WS and applicable State Agencies for both ESA listed and delisted grizzly bear populations in the contiguous 48 states.

**FSM 2600 - WILDLIFE, FISH, AND SENSITIVE PLANT HABITAT MANAGEMENT
CHAPTER 2670 - THREATENED, ENDANGERED AND SENSITIVE PLANTS AND ANIMALS**

2676.16f - Mineral Exploration and Development

With proper coordination, minerals related activities may be compatible with grizzly bears and their habitat. Advise potential lessees, licensees, permittees, and operators of the known or possible use of habitat by grizzly bears in the subject area, and the applicable requirements of the Endangered Species Act and its implementing regulations or other applicable management direction. Mineral activities will be recognized and developed in accordance with existing laws, regulations, and rights of the individuals and companies involved. Project design changes and/or mitigation measures will be required as appropriate in order to adequately protect grizzly bears and their habitat. Stipulations or conditions of approval, potentially including no surface occupancy for discretionary actions, will be applied if needed for the protection and management of grizzly bears and their habitat.

2676.16g - Timber Management

With proper coordination, timber management activities may be compatible with grizzly bear habitat. Plan, implement, and monitor transportation systems, harvest activities, and silvicultural prescriptions that help to achieve grizzly bear habitat management objectives.

Use the grizzly bear cumulative effects assessment process to analyze and monitor motorized access management objectives. Develop and implement guidelines for construction and management of transportation systems to ensure compatibility with grizzly bear habitat management objectives.

2676.16h - Prescribed Fire

Develop and implement appropriate prescriptions for lightning and human caused fires to achieve grizzly bear habitat objectives. Appropriate prescriptions within wilderness would permit fire to play its natural role in ecosystem dynamics without significant loss of habitats (such as mature whitebark pine) important to conservation of the grizzly bear. Follow guidelines in FSM 2324.22 for use of prescribed fire in designated wilderness.

2676.16i - Land Adjustments

Identify priorities and seek to secure private lands where development of such lands may be incompatible with grizzly bear conservation. Such lands may be protected through donation, exchange, conservation easements, or purchase.

2676.16j - Habitat Connectivity

Through management of NFS lands and transportation systems, and through coordination with other federal, state, and local agencies, and with private land owners, maintain movement opportunities for grizzly bears within and between ecosystems.

**FSM 2600 - WILDLIFE, FISH, AND SENSITIVE PLANT HABITAT MANAGEMENT
CHAPTER 2670 - THREATENED, ENDANGERED AND SENSITIVE PLANTS AND ANIMALS**

2676.17 - Grizzly Bear Population Management

2676.17a - Translocation

Translocation may be an appropriate management technique to restore or augment populations or improve genetic diversity, and to resolve conflicts involving nuisance grizzlies. Bear trapping and transportation are the primary responsibility of the states or National Park Service, with assistance from the U.S. Fish and Wildlife Service for listed populations.

The Forest Service will support the translocation of grizzly bears for conflict resolution, population restoration or augmentation and to maintain the genetic health of established populations. When carrying out such activities on National Forest System lands, the Forest Service and lead agency(s) responsible for the action will cooperate and involve the public as appropriate. Select grizzlies that have a high probability of survival and reproductive success and low probability of conflicts with humans.

2676.17b - Helicopters

Helicopters are an effective means of conducting certain management activities such as translocation of grizzly bears in isolated areas. However, in designated wilderness, helicopter use and landing must be pre-approved by the Regional Forester or his/her designee, and may be determined appropriate only when necessary to meet needs for protection and administration of the area as wilderness (FSM 2326).

The use of helicopters in designated wilderness can be consistent with the protection of wilderness character when it is essential to grizzly bear conservation. When deciding whether or not to use helicopters for grizzly bear-related work in designated wilderness, base the decision primarily on whether it is essential for the proposed conservation work. Convenience or the expense of other options should be secondary considerations.

2676.17c - Supplemental Feeding

Supplemental feeding is not needed to improve grizzly bear nutrition and reproductive rates and should not be approved. Experiments to test the usefulness of temporary baiting to prevent or abate conflicts between grizzlies and humans or grizzlies and private property may be considered, consistent with applicable state laws.