



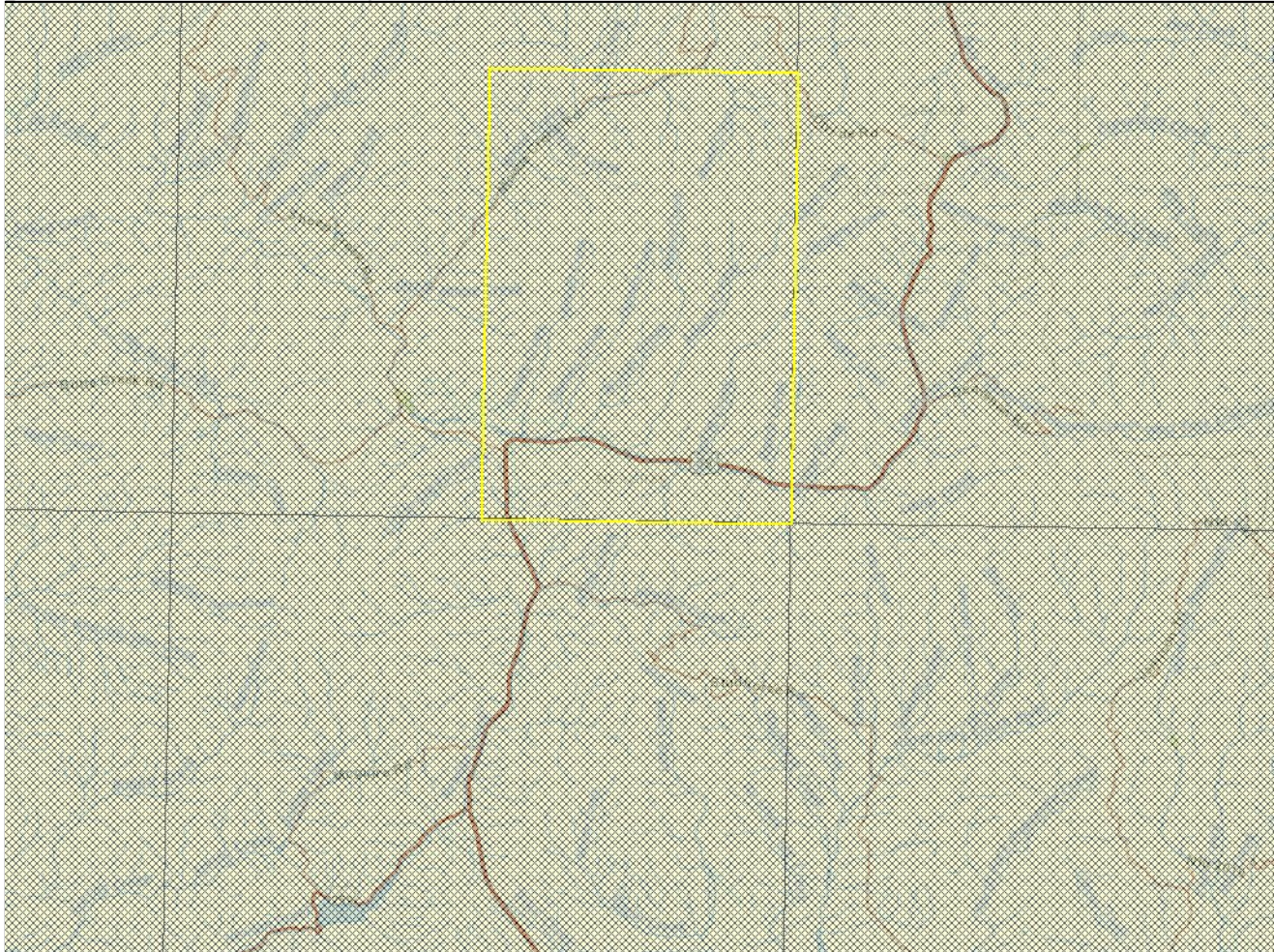
Latitude 46.65835
Longitude -110.39400
46.86404 -111.22709



Montana Generalized Observations Report

Report generated 12/1/2016 10:59:02 AM

Generalized Observations for ((All Amphibians))



Amphibians - Boreal Chorus Frog (*Pseudacris maculata*) Obs Count: 1 Earliest Obs: 1994 Recent Obs: 1994

Global Rank: G5
State Rank: S4

Agency Status
USFWS:
USFS:
BLM:
FWP SWAP:

OBS ID	OBSERVATION DATE	LOCATION (Calculated)
51047955	May 26, 1994	County Judith Basin, MT QQL 29B3 Location Pond in Russian Flats, Little Belt Mountains Precision 250 meters

Amphibians - Columbia Spotted Frog (*Rana luteiventris*) Obs Count: 107 Earliest Obs: 1944 Recent Obs: 2011

Global Rank: G4
State Rank: S4

Agency Status
USFWS:
USFS:
BLM:
FWP SWAP:

OBS ID	OBSERVATION DATE	LOCATION (Calculated)
51969405 Provisional	Jul 19, 2011	County Cascade, MT QQL 29A2 Location Kings Hill, Belt Creek, headwater beaver ponds Precision 100 meters
52109817	Jul 05, 2011	County Judith Basin, MT QQL 29B3 Location Active beaver pond on tributary to Deadhorse Creek, 1 mile N of Clyde Park Precision 400 meters
52109819	Jul 05, 2011	County Judith Basin, MT QQL 29B3 Location Multipooled wetland in Clyde Park Precision 400 meters
52109766	Jun 15, 2011	County Meagher, MT

OBS ID	OBSERVATION DATE	LOCATION <small>(Calculated)</small>
		QQLL 29A1 Location Inactive beaver pond, 1.6 miles NW of junction of Adams and Sheep Creeks Precision 400 meters
52109568	Jul 08, 2010	County <i>Judith Basin, MT</i> QQLL 29B3 Location Hidden Lake Precision 400 meters
51969392 Provisional	Jul 08, 2010	County <i>Judith Basin, MT</i> QQLL 29B3 Location South Fork of Judith River, upper beaver ponds Precision 100 meters
51969388 Provisional	Jun 24, 2010	County <i>Judith Basin, MT</i> QQLL 29B3 Location Russian Creek, beaver ponds Precision 100 meters
52109402	Jun 24, 2010	County <i>Judith Basin, MT</i> QQLL 29B3 Location Multipooled wetland in Clyde Park Precision 400 meters
52109404	Jun 24, 2010	County <i>Judith Basin, MT</i> QQLL 29B3 Location Active beaver pond on tributary to Deadhorse Creek, 1 mile N of Clyde Park Precision 400 meters
52109388	Jun 14, 2010	County <i>Meagher, MT</i> QQLL 29A1 Location Inactive beaver pond, 1.6 miles NW of junction of Adams and Sheep Creeks Precision 400 meters
51969385 Provisional	Jun 14, 2010	County <i>Cascade, MT</i> QQLL 29A2 Location Kings Hill, Belt Creek, headwater beaver ponds Precision 100 meters
51143435 Provisional	Sep 04, 2009	County <i>Meagher, MT</i> QQLL 29A2 Location Upper Sheep Creek Precision 20 meters
51140662 Provisional	Jul 02, 2009	County <i>Judith Basin, MT</i> QQLL 29B3 Location Russian Creek Beaver Dams Precision 50 meters
51140663 Provisional	Jul 02, 2009	County <i>Judith Basin, MT</i> QQLL 29B3 Location Upper South Fork Judith Beaver Dams Precision 50 meters
51140579 Provisional	Jun 19, 2009	County <i>Judith Basin, MT</i> QQLL 29B3 Location Clyde Park Precision 50 meters
51140581 Provisional	Jun 19, 2009	County <i>Judith Basin, MT</i> QQLL 29B3 Location Deadhorse Trib Beaver Pond/Seep Precision 50 meters
51140583 Provisional	Jun 19, 2009	County <i>Judith Basin, MT</i> QQLL 29B3 Location Hidden Lake Precision 20 meters
51140569 Provisional	Jun 10, 2009	County <i>Meagher, MT</i> QQLL 29A1 Location Daniels' Creek beaver ponds Precision 20 meters
51140570 Provisional	Jun 10, 2009	County <i>Cascade, MT</i> QQLL 29A2 Location Belt Headwater Beaver Ponds Precision 50 meters
51140568 Provisional	Jun 25, 2008	County <i>Cascade, MT</i> QQLL 29A2 Location Belt Headwater Beaver Ponds Precision 50 meters
51140567 Provisional	Jun 09, 2008	County <i>Meagher, MT</i> QQLL 29A1 Location Daniel's Creek beaver ponds Precision 20 meters
51140597	Jun 13, 2007	County <i>Meagher, MT</i> QQLL 29A3 Location Crater Lake Precision 100 meters
51140598	Jun 13, 2007	County <i>Meagher, MT</i> QQLL 29A4 Location Geis Trib Pond Precision 100 meters
51140565 Provisional	May 17, 2007	County <i>Judith Basin, MT</i> QQLL 29B3 Location Deadhorse Trib Beaver Pond/Seep Precision 50 meters
51140563 Provisional	May 16, 2007	County <i>Meagher, MT</i> QQLL 29A1 Location Daniel's Creek beaver ponds Precision 20 meters
51140561 Provisional	May 15, 2007	County <i>Cascade, MT</i> QQLL 29A2 Location Belt Headwaters Beaver Ponds Precision 50 meters
52106831	Jun 19, 2006	County <i>Judith Basin, MT</i> QQLL 29B3 Location Active beaver pond on tributary to Deadhorse Creek, 1 mile N of Clyde Park Precision 400 meters
52106827	Jun 16, 2006	County <i>Meagher, MT</i> QQLL 29A1 Location Inactive beaver pond, 1.6 miles NW of junction of Adams and Sheep Creeks Precision 400 meters

OBS ID	OBSERVATION DATE	LOCATION (Calculated)
52106826	Jun 15, 2006	County <i>Cascade, MT</i> QQLL 29A2 Location Inactive beaver pond, 0.9 miles N of Kings Hill Campground Precision 400 meters
51108058	Jun 15, 2006	County <i>Cascade, MT</i> QQLL 29A2 Location Belt Headwater Beaver Ponds Precision 20 meters
52106295	Jul 13, 2005	County <i>Judith Basin, MT</i> QQLL 29B3 Location Active beaver pond on tributary to Deadhorse Creek, 1 mile N of Clyde Park Precision 400 meters
52106163	Jul 08, 2005	County <i>Meagher, MT</i> QQLL 29A1 Location Inactive beaver pond, 1.6 miles NW of junction of Adams and Sheep Creeks Precision 400 meters
51434893 Provisional	Jul 07, 2005 Notes: Data accuracy reported as: Day	County <i>Judith Basin, MT</i> QQLL 29B3 Location 4.2 km S of Hidden Lake Precision 20 meters
51106659	Sep 23, 2004	County <i>Meagher, MT</i> QQLL 29A1 Location Daniels Creek Upper Beaver Pond Precision 1000 meters
52105391	Jul 27, 2004	County <i>Judith Basin, MT</i> QQLL 29B3 Location Active beaver pond on tributary to Deadhorse Creek, 1 mile N of Clyde Park Precision 400 meters
52105336	Jul 24, 2004	County <i>Meagher, MT</i> QQLL 29A1 Location Inactive beaver pond, 1.6 miles NW of junction of Adams and Sheep Creeks Precision 400 meters
51106661	Jun 17, 2004	County <i>Meagher, MT</i> QQLL 29A1 Location Daniels Creek Upper Beaver Pond Precision 1000 meters
52104470	Jun 16, 2004	County <i>Judith Basin, MT</i> QQLL 29B3 Location Active beaver pond on tributary to Deadhorse Creek, 1 mile N of Clyde Park Precision 400 meters
52103475	Jul 08, 2003	County <i>Judith Basin, MT</i> QQLL 29B3 Location Hidden Lake Precision 400 meters
52103485	Jul 08, 2003	County <i>Meagher, MT</i> QQLL 29A1 Location Inactive beaver pond, 1.75 miles ENE of Green Mountain Precision 400 meters
52103489	Jul 08, 2003	County <i>Judith Basin, MT</i> QQLL 29B3 Location Active beaver pond on tributary to Deadhorse Creek, 1 mile N of Clyde Park Precision 400 meters
52103490	Jul 08, 2003	County <i>Judith Basin, MT</i> QQLL 29B3 Location Beaver ponds on South Fork Judith, 1.4 miles W of Hidden Lake Precision 400 meters
52103491	Jul 08, 2003	County <i>Judith Basin, MT</i> QQLL 29B3 Location Multipooled wetland in Clyde Park Precision 400 meters
51106380	Jun 25, 2003	County <i>Meagher, MT</i> QQLL 29A1 Location Juniper Creek, 0.38 miles N of confluence of Juniper Creek & Sheep Creek Precision 100 meters
51106196	Jun 13, 2003	County <i>Judith Basin, MT</i> QQLL 29B3 Location Upper Deadhorse Seeps Precision 50 meters
51106198	Jun 13, 2003	County <i>Judith Basin, MT</i> QQLL 29B3 Location Deadhorse tributary beaver pond Precision 50 meters
52103329	Jun 13, 2003	County <i>Judith Basin, MT</i> QQLL 29B3 Location Multipooled wetland in Clyde Park Precision 400 meters
51106189	Jun 04, 2003	County <i>Cascade, MT</i> QQLL 29A2 Location Upper Belt Beaver Ponds Precision 50 meters
52103251	May 30, 2003	County <i>Meagher, MT</i> QQLL 29A1 Location Inactive beaver pond, 1.6 miles NW of junction of Adams and Sheep Creeks Precision 400 meters
52102597	Jun 21, 2002	County <i>Judith Basin, MT</i> QQLL 29B3 Location Willow Park ephemeral wetland, Deadhorse Access Road Precision 400 meters
52102598	Jun 21, 2002	County <i>Judith Basin, MT</i> QQLL 29B3 Location Beaver ponds on South Fork Judith, 1.4 miles W of Hidden Lake Precision 400 meters
51140599	Jun 20, 2002	County <i>Judith Basin, MT</i> QQLL 29B3 Location Russian Creek Precision 100 meters
52102595	Jun 20, 2002	County <i>Judith Basin, MT</i> QQLL 29B3

OBS ID	OBSERVATION DATE	LOCATION <i>(Calculated)</i>
		Location Hidden Lake Precision 400 meters
52102540	Jun 19, 2002	County <i>Cascade, MT</i> QQLL 29A2 Location Inactive beaver pond, 0.9 miles N of Kings Hill Campground Precision 400 meters
52102542	Jun 19, 2002	County <i>Cascade, MT</i> QQLL 29A2 Location Inactive beaver pond, 1.2 miles N of Kings Hill Campground Precision 400 meters
52102538	Jun 17, 2002	County <i>Meagher, MT</i> QQLL 29A1 Location Inactive beaver pond, 1.6 miles NW of junction of Adams and Sheep Creeks Precision 400 meters
51093401	Jun 17, 2002	County <i>Meagher, MT</i> QQLL 29A1 Location Daniels Creek ponds Precision 10 meters
51084900	Jun 06, 2002	County <i>Cascade, MT</i> QQLL 29A2 Location Belt Creek head waters Precision 100 meters
51064165	Jun 04, 2002	County <i>Meagher, MT</i> QQLL 29A4 Location Upper Whitetail Creek Precision 100 meters
52102457	Jun 04, 2002	County <i>Judith Basin, MT</i> QQLL 29B3 Location Active beaver pond on tributary to Deadhorse Creek, 1 mile N of Clyde Park Precision 400 meters
52102002	Jul 25, 2001	County <i>Meagher, MT</i> QQLL 29A4 Location Pond, 1.1 miles E of Smoky Mountain Precision 400 meters
52102003	Jul 25, 2001	County <i>Judith Basin, MT</i> QQLL 29A2 Location Inactive beaver pond, 2.8 miles NE of Kings Hill Precision 400 meters
52101992	Jul 23, 2001	County <i>Cascade, MT</i> QQLL 29A2 Location Inactive beaver pond, 1.2 miles N of Kings Hill Campground Precision 400 meters
52101993	Jul 23, 2001	County <i>Cascade, MT</i> QQLL 29A2 Location Inactive beaver pond, 0.9 miles N of Kings Hill Campground Precision 400 meters
51084837	May 31, 2001	County <i>Cascade, MT</i> QQLL 29A2 Location Kings Hill Upper Belt ponds Precision 500 meters
51084869	May 30, 2001	County <i>Judith Basin, MT</i> QQLL 29B3 Location Deadhorse Access Road, Site 1 Precision 100 meters
51084870	May 30, 2001	County <i>Judith Basin, MT</i> QQLL 29B3 Location Deadhorse Access Road, Site 2 Precision 100 meters
51084868	May 29, 2001	County <i>Meagher, MT</i> QQLL 29A1 Location Spring/seep beaver pond between Wolsey and Daniels Precision 1000 meters
51063421	May 29, 2001	County <i>Meagher, MT</i> QQLL 29A1 Location Beaver Pond on Daniels Creek Precision 500 meters
52101650	May 29, 2001	County <i>Meagher, MT</i> QQLL 29A1 Location Inactive beaver pond, 1.6 miles NW of junction of Adams and Sheep Creeks Precision 400 meters
51063492	Sep 12, 2000	County <i>Judith Basin, MT</i> QQLL 29B3 Location S Fork Judith River Precision 500 meters
51141593 Provisional	Aug 01, 2000	County <i>Meagher, MT</i> QQLL 29A4 Location Geis Creek, headwaters pond S of Forest Road 6464 Precision 50 meters
51063490	Jul 25, 2000	County <i>Judith Basin, MT</i> QQLL 29B3 Location Dead Horse Creek Trail Head Precision 1000 meters
51063491	Jul 25, 2000	County <i>Judith Basin, MT</i> QQLL 29B3 Location Dead Horse Creek Precision 500 meters
52101428	Jul 13, 2000	County <i>Meagher, MT</i> QQLL 29A1 Location Inactive beaver ponds, 1.0 mile W of junction with Moose Creek Road Precision 400 meters
51063503	Jun 21, 2000	County <i>Cascade, MT</i> QQLL 29A2 Location Beaver ponds at head of Belt Creek Precision 500 meters
51084860	Jun 20, 2000	County <i>Meagher, MT</i> QQLL 29A1 Location Beaver pond on Daniels Creek Precision 500 meters

OBS ID	OBSERVATION DATE	LOCATION (Calculated)
51063501	Jun 20, 2000	County <i>Meagher, MT</i> QQLL 29A1 Location Beaver pond on Daniels Creek Precision 500 meters
51063487	Jun 13, 2000	County <i>Judith Basin, MT</i> QQLL 29B3 Location S Fork Judith River Precision 1000 meters
51141590 Provisional	Jun 10, 2000	County <i>Cascade, MT</i> QQLL 29A2 Location Kings Hill Pass, beaver pond Precision 1149 meters
51063485	Jun 07, 2000	County <i>Meagher, MT</i> QQLL 29A4 Location Beaver pond, Lake Creek Precision 500 meters
51061192	Aug 23, 1999	County <i>Meagher, MT</i> QQLL 29A4 Location Studhorse Creek, Little Belt Mountains Precision 250 meters
51061189	Jul 26, 1999	County <i>Meagher, MT</i> QQLL 29A1 Location Kings Hill Road, Sheep Creek Fishing Access Site Precision 100 meters
51061338	Jun 11, 1999	County <i>Meagher, MT</i> QQLL 29A1 Location Spring formed pond between Wolsey and uppermost Daniels beaver pond Precision 1000 meters
51061334	Jun 02, 1999	County <i>Cascade, MT</i> QQLL 29A2 Location Beaver ponds at head of Belt Creek Precision 500 meters
51060660	Aug 25, 1998	County <i>Meagher, MT</i> QQLL 29A1 Location Calf Creek Precision 250 meters
51060612	Jul 24, 1998	County <i>Meagher, MT</i> QQLL 29A1 Location Allen Gulch Precision 1000 meters
51060618	May 28, 1998	County <i>Cascade, MT</i> QQLL 29A2 Location Headwaters of Belt Creek Precision 500 meters
51046656	Jul 28, 1997	County <i>Meagher, MT</i> QQLL 29A1 Location Seep near Indian Creek Precision 500 meters
51046657	Jul 28, 1997	County <i>Meagher, MT</i> QQLL 29A1 Location Cabin Creek Precision 500 meters
51046658	Jul 28, 1997	County <i>Meagher, MT</i> QQLL 29A1 Location Puddles and seeps along Calf Creek Precision 500 meters
51046655	Jul 15, 1997	County <i>Judith Basin, MT</i> QQLL 29B3 Location Mouth of Russian Creek Precision 1000 meters
51046541	Jul 18, 1996	County <i>Judith Basin, MT</i> QQLL 29B1 Location Lost Fork Judith River Precision 500 meters
51046540	Jul 16, 1996	County <i>Judith Basin, MT</i> QQLL 29B3 Location Russian Creek Precision 500 meters
51046539	Jul 10, 1996	County <i>Judith Basin, MT</i> QQLL 29B3 Location Trib to Russian Creek Precision 500 meters
51046428	Jul 26, 1995	County <i>Cascade, MT</i> QQLL 29A2 Location Beaver ponds at head of Belt Creek Precision 100 meters
51046427	Jun 26, 1995	County <i>Meagher, MT</i> QQLL 29A1 Location Irrigation ditch below Wolsey Creek on Sheep Creek Precision 888 meters
51046423	Jun 01, 1995	County <i>Judith Basin, MT</i> QQLL 29B3 Location Deadhorse Creek beaver dams Precision 888 meters
51046424	Jun 01, 1995	County <i>Judith Basin, MT</i> QQLL 29B3 Location Hidden Lake (also section 15) Precision 888 meters
51046005	Jul 09, 1994	County <i>Judith Basin, MT</i> QQLL 29B3 Location Clyde Park, Little Belt Mountains Precision 200 meters
51046418	Jul 09, 1994	County <i>Judith Basin, MT</i> QQLL 29B3 Location Pond in Russian Flat, Little Belt Mountains Precision 888 meters
51046011	May 29, 1994	County <i>Meagher, MT</i> QQLL 29A3 Location Crater Lake and ponds above

OBS ID	OBSERVATION DATE	LOCATION <small>(Calculated)</small>
		Precision 888 meters
51046419	Jul 12, 1991	County <i>Judith Basin, MT</i> QQLL 29B3 Location Clyde Park Pond, Little Belt Mountains Precision 8000 meters
51045865	Aug 19, 1984	County <i>Cascade, MT</i> QQLL 29A2 Location Little Belt Mountains, 1.2 mi N of Kings Hill Pass Precision 8000 meters
51045977	Jun 27, 1973	County <i>Cascade, MT</i> QQLL 29A2 Location N of Kings Hill Campground, Hwy 89, Little Belt Mountains Precision 8000 meters
51046420	Aug 06, 1958	County <i>Meagher, MT</i> QQLL 29A3 Location Lake Creek Precision 8000 meters
51045866	Aug 08, 1944	County <i>Meagher, MT</i> QQLL 29A2 Location Neihart, 12 mi S of Precision 8000 meters

Amphibians - Western Toad (*Anaxyrus boreas*)

Obs Count: 30 Earliest Obs: 1951 Recent Obs: 2015

Species of Concern
Global Rank: G4
State Rank: S2

Agency Status
USFWS:
USFWS: SENSITIVE
BLM: SENSITIVE
FWP SWAP: SGCN2

OBS ID	OBSERVATION DATE	LOCATION <small>(Calculated)</small>
51970420	Aug 10, 2015	County <i>Meagher, MT</i> QQLL 29A4 Location North Fork of the Smith River, 7 miles NE of Sutherlin Precision 400 meters
51969406	Jul 19, 2011	County <i>Cascade, MT</i> QQLL 29A2 Location Kings Hill, Belt Creek, headwater beaver ponds Precision 100 meters
52109818	Jul 05, 2011	County <i>Judith Basin, MT</i> QQLL 29B3 Location Active beaver pond on tributary to Deadhorse Creek, 1 mile N of Clyde Park Precision 400 meters
52109403	Jun 24, 2010	County <i>Judith Basin, MT</i> QQLL 29B3 Location Active beaver pond on tributary to Deadhorse Creek, 1 mile N of Clyde Park Precision 400 meters
51141623	Jul 15, 2009	County <i>Judith Basin, MT</i> QQLL 29B3 Location Forest Road 6558, S of South Fork Judith River Precision 20 meters
51140580	Jun 19, 2009	County <i>Judith Basin, MT</i> QQLL 29B3 Location Clyde Park Precision 50 meters
51140582	Jun 19, 2009	County <i>Judith Basin, MT</i> QQLL 29B3 Location Deadhorse Creek tributary, beaver pond/seep Precision 50 meters
51138785	Jul 21, 2008	County <i>Judith Basin, MT</i> QQLL 29B3 Location South Fork Judith River, unnamed tributary E of Hoover Mountain Precision 20 meters
51138784	Jul 08, 2008	County <i>Judith Basin, MT</i> QQLL 29B3 Location Deadhorse Creek Precision 400 meters
51140600	Jun 13, 2007	County <i>Meagher, MT</i> QQLL 29A3 Location Crater Lake Precision 100 meters
51140564	May 16, 2007	County <i>Meagher, MT</i> QQLL 29A1 Location Daniels Creek, beaver ponds Precision 20 meters
52106828	Jun 16, 2006	County <i>Meagher, MT</i> QQLL 29A1 Location Inactive beaver pond, 1.6 miles NW of junction of Adams and Sheep Creeks Precision 400 meters
52106293	Jul 13, 2005	County <i>Judith Basin, MT</i> QQLL 29B3 Location Active beaver pond on tributary to Deadhorse Creek, 1 mile N of Clyde Park Precision 400 meters
51099314	Jun 18, 2005	County <i>Meagher, MT</i> QQLL 29A4 Location North Fork Smith River, above springs Precision 500 meters
51106660	Sep 23, 2004	County <i>Meagher, MT</i> QQLL 29A1 Location Daniels Creek, Upper Beaver Pond Precision 1000 meters
52103474	Jul 08, 2003	County <i>Judith Basin, MT</i> QQLL 29B3 Location Beaver ponds on South Fork Judith, 1.4 miles W of Hidden Lake Precision 400 meters
52103326	Jun 13, 2003	County <i>Judith Basin, MT</i> QQLL 29B3 Location Multipooled wetland in Clyde Park Precision 400 meters
51106197	Jun 13, 2003	County <i>Judith Basin, MT</i>

OBS ID	OBSERVATION DATE	LOCATION <small>(Calculated)</small>
		QQLL 29B3 Location Upper Deadhorse Seeps, W of Forest Service Road 274 Precision 150 meters
52102596	Jun 21, 2002	County Judith Basin, MT QQLL 29B3 Location Multipooled wetland in Clyde Park Precision 400 meters
52102537	Jun 17, 2002	County Meagher, MT QQLL 29A1 Location Inactive beaver pond, 1.6 miles NW of junction of Adams and Sheep Creeks Precision 400 meters
52102458	Jun 04, 2002	County Judith Basin, MT QQLL 29B3 Location Active beaver pond on tributary to Deadhorse Creek, 1 mile N of Clyde Park Precision 400 meters
52101652	May 29, 2001	County Meagher, MT QQLL 29A1 Location Inactive beaver pond, 1.6 miles NW of junction of Adams and Sheep Creeks Precision 400 meters
51061337	Jun 11, 1999	County Meagher, MT QQLL 29A1 Location Daniels Creek, beaver ponds Precision 150 meters
51058335	Jul 17, 1996	County Judith Basin, MT QQLL 29B1 Location Lost Fork Judith River Precision 500 meters
51056582	Jun 26, 1995	County Meagher, MT QQLL 29A1 Location Daniels Creek, beaver ponds Precision 100 meters
51063251	Jul 12, 1991	County Judith Basin, MT QQLL 29B3 Location Clyde Park pond Precision 80 meters
51118509	Aug 19, 1984	County Cascade, MT QQLL 29A2 Location Hwy 89, 1.2 miles N of Kings Hill Pass, Little Belt Mountains Precision 800 meters
51047704	Jan 01, 1966 to Jun 21, 1967 Notes: Spring 1966 and/or Spring 1967.	County Cascade, MT QQLL 29A2 Location Kings Hill Precision 6000 meters
51056570	Aug 24, 1951	County Meagher, MT QQLL 29A1 Location Adams Ranch, Sheep Creek Precision 800 meters
51056569	Aug 20, 1951	County Meagher, MT QQLL 29A1 Location Sheep Creek near Jumping Creek Campgrounds Precision 600 meters

Citation for this report:
Montana Generalized Observations Report
Generalized Observations for ((All Amphibians))
Within Lat/Long: (46.65835,-110.39400) to (46.86404,-111.22709)
Natural Heritage Map Viewer. Montana Natural Heritage Program.
Retrieved on December 1, 2016, from <http://mtnhp.org/mapviewer/GenOBSReport.aspx>